



2022  
REVIEW

23

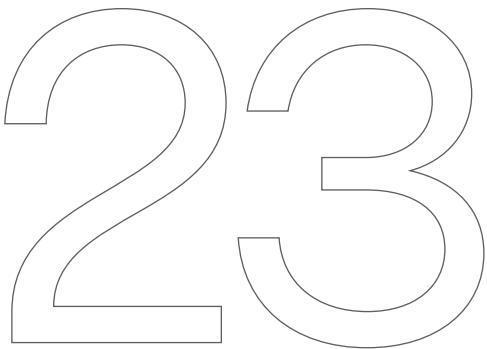
EVENTS 2022—2023	2
FOUNDER'S MESSAGE	4
OVERVIEW OF THE LNK INDUSTRIES BOARD	6
AWARDS AND ACCOLADES	14
LNK INDUSTRIES KEY PROJECTS	16
CORPORATE AND SOCIAL RESPONSIBILITY	42
PARTNERS	54
CONTACTS	55



# CREATING SUSTAINABLE, UNIQUE LIVING SPACES FOR EVERYONE

## RENAISSANCE

A unique residential building that complements the urban environment and the historic centre of Riga with architectonic solutions of high quality and originality, offering residents the pleasure of modern city life.



## LIEPAJA GROYNE

A 225-metre-long seashore protection structure, this groyne or breakwater, has been built to the north of the city of Liepaja to protect the city from the threat of coastal erosion. Part of the groyne – 177 metres – extends into the sea.

## DAUDERSALA OVERPASS

The traffic overpass over the Riga-Skulte railway tracks with access tracks is one of the most ambitious new constructions of traffic infrastructure in recent decades.

It consists of seven separate span structures in both directions, with connections to Viestura Avenue and Tvaika Street.



EVENTS  
IN 2022



CONSTRUCTION OF THE LARGEST PRIVATE  
SPORT COMPLEX IN LATVIA, LNK SPORTA PARKS  
IN RIGA, LATVIA.



CONSTRUCTION OF THE CAT'S  
HEART CAT CARE CENTRE  
IN RIGA, LATVIA.



CONSTRUCTION OF THE MODERN  
RESIDENTIAL BUILDING RENAISSANCE  
IN RIGA CITY CENTRE, LATVIA.



MODERNISATION OF THE CLASS-A  
MULTIFUNCTIONAL OFFICE BUILDING V118  
AT 118 VALDEMARA STREET IN RIGA, LATVIA.



LAYING OF A TIME CAPSULE AT THE RAIL BALTICA  
STATION AT RIGA AIRPORT IN RIGA, LATVIA.

EVENTS  
IN 2023



CONSTRUCTION OF THE  
DAUDERSALA OVERPASS  
IN RIGA, LATVIA.



CONSTRUCTION OF  
THE KEKAVA BYPASS  
IN LATVIA.



CONSTRUCTION OF A GROYPE SEASHORE  
PROTECTION STRUCTURE NEAR LIEPAJA  
IN LATVIA.



RECONSTRUCTION OF GENERALA  
RADZINA EMBANKMENT  
IN RIGA, LATVIA.



CONSTRUCTION OF THE CLASS-A  
OFFICE COMPLEX DIENVIDU VĀRTI  
IN RIGA, LATVIA.



RESTORATION AND RECONSTRUCTION  
OF THE CASTELLUM AT RIGA CASTLE  
IN RIGA, LATVIA.



CONSTRUCTION AT THE MODERN  
BUILDING KAĶU MĀJA OF THE LBTU WMF  
SMALL ANIMAL SHELTER IN JELGAVA, LATVIA.



RECONSTRUCTION OF THE KLAIPEDA  
PORT'S SOUTH BREAKWATER  
IN LITHUANIA.



CLASS-A CIVIL ENGINEERING  
OFFICE COMPLEX V118  
IN RIGA, LATVIA.



MESSAGE FROM  
THE FOUNDER

QUALITY. INNOVATION.  
EXPERIENCE. THE KEY TO  
ACHIEVING SUCCESS AND  
SUSTAINABILITY IN BUSINESS.

This year marks the 36th anniversary of the Latvian Innovation Complex (LNK–Latvijas Novitātes Komplekss in Latvian), under which LNK Industries was founded nearly 14 years ago. The word innovation is embedded in our company's name to ensure we maintain a strategic leadership position, as well as stay ahead of the technological curve.

The premier general contractor in Latvia, LNK Industries leverages a variety of strategies and tools to achieve its business objectives. Our success is largely attributed to our relentless focus on innovation. Advanced solutions are at the core of our approach to stay competitive and excel in the construction industry.

Through our dedication to innovation, we've become a leading name in industrial, civil and infrastructure construction. Our highly skilled team has completed several high-profile domestic and international projects. One notable example is the construction of an underwater wall at the port entrance using Finnish equipment and technology. A project like this demonstrates how we can achieve extraordinary results by integrating cutting-edge technologies.

The innovations we have introduced have reshaped industry standards and sped up the timelines of construction projects. For example, the introduction of fast-hardening concrete technology in Latvia not only reduced construction time but also increased concrete strength tenfold, setting a new industry benchmark.



ALEKSANDRS  
MILOVS

R.SC.ING  
FOUNDER OF LNK INDUSTRIES

Furthermore, we have developed specialised technological solutions, such as mobile bunkers for transshipment, which have significantly improved the efficiency of bulk cargo handling.

These achievements have been reached thanks to our team's expertise in advanced technologies, modern calculations, and mathematical modelling

The Riga–Skulte railroad overpass; the Renaissance A-class apartment building in Riga's historical centre; and the renovation of the Art Nouveau building TWENTY, which combines historic charm with modern amenities, were among the key projects undertaken by LNK Industries in Latvia in 2022 and 2023.

These and many other projects prove our ability to create a truly innovative and sustainable environment in Latvia and the broader Baltic region.

We are proud of what we have accomplished and grateful for the opportunity to work with an excellent team and reliable partners, jointly building a sustainable and forward-looking construction industry.



# MESSAGE FROM THE BOARD

LNK Industries has firmly established itself as a leader in executing complex construction projects across the Baltics. A team of highly skilled engineers contributes to the company's success by delivering innovative, high-quality solutions tailored to each client's needs. Through strategic and efficient process management, LNK Industries consistently achieves excellence despite challenging circumstances, tight deadlines, and changing market conditions.

The success of LNK Industries' recent projects have further solidified its reputation and demonstrates its extensive technical expertise. Among these projects are the renovation of the Mežaparks Grand Bandstand, the restoration of Riga Castle's Castellum (the convent building), and the installation of an underwater wall at Klaipeda Port.

Even in the face of the pandemic, geopolitical tensions, and other challenging economic factors, LNK Industries has demonstrated remarkable resilience and adaptability. Through its ongoing commitment to maintaining high standards throughout all of its projects, the company has been able to effectively coordinate its resources and supply chains in response to changes in the market.

LNK Industries continues to set industry standards by undertaking complex and high-profile projects. Taking this approach not only makes the company more competitive, but also promotes long-term stability and sustainable growth.

Through a clear strategic direction, LNK Industries is expanding its market share in the Baltics, strengthening its position, and actively participating in major construction and infrastructure projects.

Driven by a robust project portfolio, innovative solutions, and unwavering quality standards, LNK Industries is and will remain a dominant force in the construction industry across the Baltics.



ARTJOMS  
MILOVS

LNK INDUSTRIES  
CHAIRMAN OF THE COUNCIL



KASPARS  
RATKEVIČS

LNK INDUSTRIES  
MEMBER OF THE BOARD



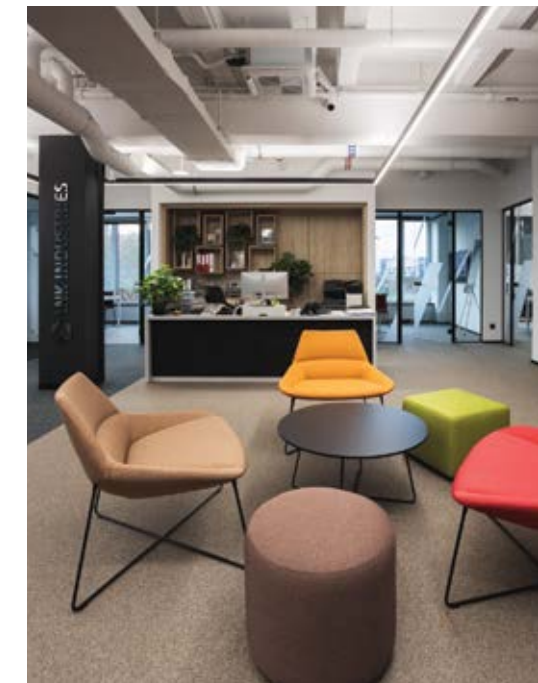
# LNK INDUSTRIES TEAM OF 2023!





# OUR NEW HOME!

V188, OUR NEW OFFICE, IS A PLACE WHERE NEW GOALS AND INNOVATIONS ARE BORN, WHERE ANYONE AND EVERYONE CAN GROW AND DEVELOP PROFESSIONALLY. IT'S A PLACE WHERE WE LET OUR DREAMS AND IDEAS FLY. WHETHER THAT'S WORKING ON EVERYDAY TASKS OR GETTING IN THE HOLIDAY SPIRIT.



Every new project is always a challenge for a builder, constantly requiring new knowledge and skills, but despite the challenges during construction, thanks to our experience in reconstruction of buildings, Riga has acquired yet another office building that meets modern requirements. We are satisfied with what we have achieved and with the fact that the building has also become our company's new home, where we feel comfortable and at ease.

YEAR 2022 MAIN INDICATORS  
FOR LNK INDUSTRIES

TURNOVER	85 MIL
EXPORT	26 MIL
NET PROFIT	0.5 MIL
NUMBER OF EMPLOYEES	141

AGE

UNDER 30	9
30–50	104
OVER 50	28

LENGTH OF EMPLOYMENT

1–2 YEARS	30
3–4 YEARS	52
5–7 YEARS	31
8 OR MORE	28

2022

YEAR 2023 MAIN INDICATORS  
FOR LNK INDUSTRIES

TURNOVER	68 MIL
NET PROFIT	3 MIL
NUMBER OF EMPLOYEES	120

AGE

UNDER 30	11
30–50	82
OVER 50	27

LENGTH OF EMPLOYMENT

1–2 YEARS	20
3–4 YEARS	48
5–7 YEARS	20
8 OR MORE	32

2023



# INDUSTRY AWARDS 2022–2023

LATVIAN CONSTRUCTION ANNUAL AWARDS 2022

2ND PLACE IN "THE MOST ENERGY-EFFICIENT PUBLIC BUILDING 2022" CATEGORY: AWARDED TO THE SCIENCE AND INNOVATION CENTRE VIZIUM IN VENTSPILS.

RECOGNITION IN THE "NEW BUILDING — PUBLIC BUILDING" CATEGORY: AWARDED TO THE PROJECT SHED CO LIVING RIGA AT 8/12 JELGAVAS STREET, RIGA.

RECOGNITION IN THE "PROJECT MANAGER OF THE YEAR" CATEGORY: AWARDED TO ALEKSEJS TOKAREVS.

RECOGNITION IN THE "PROJECT MANAGER OF THE YEAR" CATEGORY: AWARDED TO RUSLANS BRJHOVICKIS.

RECOGNITION IN THE "NEW CONSTRUCTION WORK MANAGER" CATEGORY: AWARDED TO JĀNIS LIBERS.

RECOGNITION IN THE "WOMEN IN ARCHITECTURE, CONSTRUCTION, DESIGN" COMPETITION: AWARDED TO JEĻENA VASIĻJEVA

BEST BUILDING OF THE YEAR IN LATVIA 2022

3RD PLACE IN THE "ENGINEERING STRUCTURE" CATEGORY: AWARDED TO LNK FOR PHASE 1 OF SPORTA PARKS, 5 LEJUPES STREET, RIGA.

RECOGNITION IN THE "NEW RESIDENTIAL BUILDING" CATEGORY: AWARDED TO RENAISSANCE, 6 VESETAS STREET, RIGA.



CONSTRUCTION INDUSTRY GRAND PRIX 2023

RECOGNITION IN THE "ENGINEER OF THE YEAR" CATEGORY: AWARDED TO ALEKSANDRS STASENS.

LATVIAN CONSTRUCTION ANNUAL AWARD 2023

GRAND PRIX AWARDED TO RECONSTRUCTION AND RESTORATION OF THE RIGA CASTLE CONVENT (PHASE 2), PHASES I AND II OF CONSTRUCTION WORKS.

2ND PLACE IN THE "NEW ENGINEERING STRUCTURE" CATEGORY: AWARDED TO DAUDERSALA FLYOVER IN RIGA.

2ND PLACE IN THE "IMPROVEMENT OF TERRITORY" CATEGORY: AWARDED TO "IMPLEMENTATION OF THE INFRASTRUCTURE RELATED TO RAIL BALTICA IN THE CENTRE OF RIGA".

3RD PLACE IN THE "NEW ENGINEERING STRUCTURE" CATEGORY: AWARDED TO "COASTAL PROTECTION WORKS – GROYNĒ", IN LIEPAJA.

2ND PLACE IN THE "CONSTRUCTION WORK MANAGER" CATEGORY FOR THE "RIGA CASTLE" OBJECT: AWARDED TO VALDIS ČERPAKOVSKIS.

RECOGNITION IN THE "CONSTRUCTION MANAGER" CATEGORY FOR THE OBJECT "COASTAL PROTECTION WORKS – GROYNĒ", IN LIEPAJA.

RECOGNITION IN THE "CONSTRUCTION WORK MANAGER" CATEGORY FOR THE IMPLEMENTATION OF THE INFRASTRUCTURE RELATED TO RAIL BALTICA IN THE CENTRE OF RIGA, ĢENERĀLA RADZIŅA EMBANKMENT: AWARDED TO MĀRTIŅŠ SLIŠĀNS

RECOGNITION IN THE "CONSTRUCTION WORK MANAGER" CATEGORY FOR DAUDERSALA FLYOVER IN RIGA AWARDED TO ROMANS BARANOVŠ

BEST BUILDING OF THE YEAR IN LATVIA 2023

1ST PLACE IN THE "LANDSCAPE BUILDING" CATEGORY: AWARDED TO RAIL BALTICA FOR CITY CENTRE INFRASTRUCTURE, IN RIGA.

1ST PLACE IN THE "RESTORATION" CATEGORY: AWARDED TO THE RIGA CASTLE CONVENT, 3 PILS SQUARE, RIGA.

3RD PLACE IN THE "ENGINEERING STRUCTURE" CATEGORY: AWARDED TO TRAFFIC FLYOVER OVER THE RAILWAY RIGA–SKULTE, IN RIGA.

3RD PLACE IN THE "ENGINEERING STRUCTURE" CATEGORY: AWARDED TO RAIL BALTICA FOR CITY CENTRE INFRASTRUCTURE, IN RIGA.





# DAUDERSALA FLYOVER

The Daudersala flyover is part of the Eastern Motorway: an ambitious traffic infrastructure project aimed at connecting the Port of Riga with the Southern Bridge and redirecting traffic around the city centre.

The flyover consists of nine separate span structures and is 454.4 metres long, excluding turnoffs. A major challenge during the project was the need to ensure 35-metre spacing between the flyover pillars in the section over Viestura Avenue. As a result, a solution rarely found in Latvia was applied: an extradosed span structure supported by a high-strength post-tensioned steel reinforcement and additionally held in place by a pylon truss.

The project is unusual due to the complex utility system involved, consisting of electricity, lighting, storm sewerage, water supply, and electronic communication networks, as well as a rail and tram catenary system. During the project, the only crossing of railway tracks over tram tracks in Latvia was reconstructed, and a new roundabout was created, for which reinforced concrete road kerbs were used for the first time in Riga.

LOCATION	RIGA, LATVIA
COMMISSIONED BY	RIGA CITY COUNCIL TRANSPORT DEPARTMENT
PROJECT TYPE	INFRASTRUCTURE CONSTRUCTION
DESIGNED BY	SIA TILTPROJEKTS
STARTED	SPRING 2020
COMPLETED	END OF 2022





# RAIL BALTICA INFRASTRUCTURE AT RIGA AIRPORT

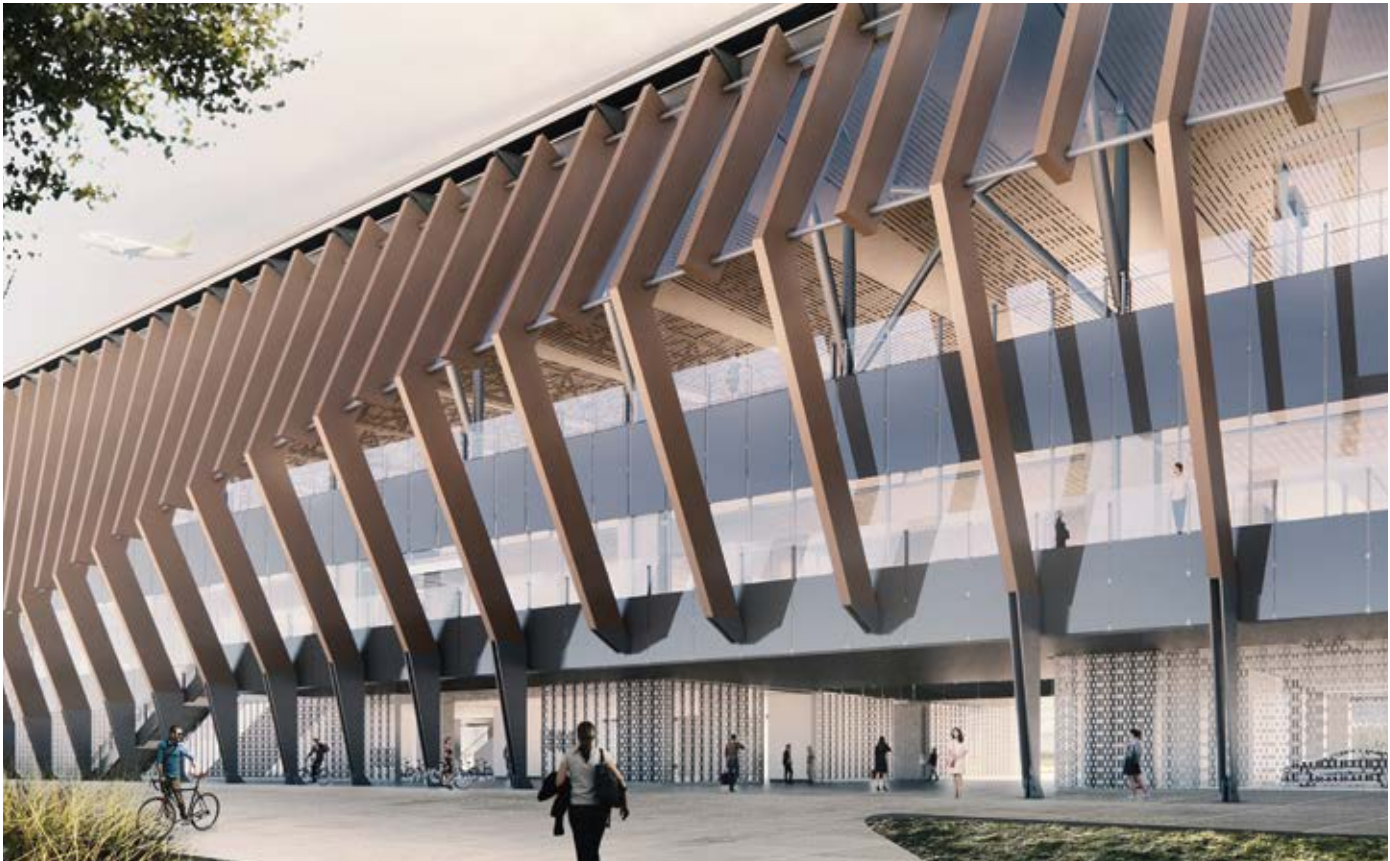
The Rail Baltica station at Riga airport is the first connecting point between high-speed rail and air traffic in the Baltics. It will offer new high-quality mobility opportunities and conveniences to residents of Latvia, tourists and transit passengers.

In order for the railway line to occupy the smallest possible area of the airport and not hinder passengers' access to infrastructure, it will be placed 10 m above the ground on the viaduct, which is one of the longest in the Baltic States, at 1,500 m.

This will be the first railway viaduct in the Baltics, built from highly durable COR-TEN steel. The dominant element of the station building facade will be wood. The project envisages the construction of a railway overpass over the Jūrmala motorway, ensuring the continuity of traffic on all eight highway lanes.

The work is being carried out under increased safety requirements, implementing construction works without closing the site to car traffic, and using low CO2 emission technologies. As a result of the completion of the project, it will be convenient for passengers travelling from the airport to the train station and for those arriving at the airport by car, bicycle, electric car or public transport.

LOCATION	MARUPE, LATVIA	DESIGNED BY	SINTAGMAPRODEX. SIA VEKTORS T
COMMISSIONED BY	SIA EIROPAS DZELZCEĻA LĪNIJAS	STARTED	SUMMER 2021
PROJECT TYPE	INFRASTRUCTURE CONSTRUCTION	COMPLETED	2025





# RAIL BALTICA INFRASTRUCTURE IN THE CENTRE OF RIGA

Within the framework of Rail Baltica, a railway infrastructure project of European importance, the reconstruction of Ģenerāļa Radziņa Embankment was carried out. As a result of the project, the surroundings of the Central Station have been improved, and safe and modern solutions have been built for pedestrians, cyclists and public transport. As a result of the construction works, underground and engineering communications on the embankment were restored, as were external water supply and sewerage networks, gas supply systems, and electricity supply and distribution networks.



LOCATION	RIGA, LATVIA
COMMISSIONED BY	RIGA CITY COUNCIL
PROJECT TYPE	INFRASTRUCTURE CONSTRUCTION
DESIGNED BY	PILNSABIEDRĪBA RBBL
STARTED	FEBRUARY 2023
COMPLETED	OCTOBER 2023

Street surface was constructed in part of Riga Central Market, and the bridge over the city canal was restored. To make the canalside accessible for everyone, stairs and a ramp for pedestrians and cyclists were built. The ramp area has been built with a pavement, landscaping elements have been installed, and greenery has been planted in the area.

Beautification works and planting of greenery was carried out in the area of the embankment for the convenience of pedestrians and cyclists, and the bicycle path connecting to the forthcoming Rail Baltica railway bridge over the River Daugava was renovated.



The waterfront's redevelopment included functional improvements and environmentally friendly solutions. The red oak planted during the bus station's construction in the 1960s was moved to a new permanent location on Ģenerāļa Radziņa Embankment.

The tree and supporting metal structures weighed about 40 tonnes. The technically complex operation was successful thanks to the cooperation of several services and companies, and the red oak was integrated into the vicinity of the waterfront on Ģenerāļa Radziņa Embankment.





# KEKAVA BYPASS

The Ķekava bypass is part of the A7 motorway between Riga, Bauska and the Lithuanian border, and is also a component part of the E67 Via Baltica international motorway. In this way the capital of Latvia, Riga, is connected conveniently and quickly to other European countries, including Lithuania and Estonia. The Ķekava bypass is included in the TEN-T (Trans-European Transport Network) programme, which is designed to improve mobility, reduce environmental impact, and ensure the expansion of European transportation networks. Besides improving transit and intercity traffic, the newly constructed bypass will also improve safety on the roads.

The Ķekava bypass is the first large-scale public-private sector (PPP) cooperation in road construction in the Baltics. LNK Industries is responsible for four key infrastructure sites within the Ķekava bypass project. The company's team built overpasses of 70 and 80 metres in

Because the bypass road is in a swampy area, temporary roads were built to facilitate traffic flow. It was also challenging to organise the work of the concreting of two overpasses – 930 m3 required a whole day of intensive work, while 803 m3 took 20 hours without interruption.

As soon as the concreting of the ground was complete, culverts were installed and slopes were mounted. To build the culvert, the direction of the water flow and the ground was altered from unstable to stable. This bypass project's curvature, with only a few right angles, makes it unique.

LOCATION	ĶEKAVA, LATVIA
COMMISSIONED BY	VSIA LATVIAN STATE ROADS (MINISTRY OF TRANSPORT OF THE REPUBLIC OF LATVIA)
PROJECT TYPE	INFRASTRUCTURE CONSTRUCTION

DESIGNED BY	AS KEKAVA ABT
STARTED	JULY 2021
COMPLETED	DECEMBER 2023





# RIGA CASTLE



LNK Industries, in partnership with a locally and internationally renowned team of experts, has successfully completed large-scale restoration and interior works on the convent (citadel), the oldest part of the Riga castle. It is connected to the forecourt of Riga Castle and the eastern extension, which houses the offices of the President of Latvia. Riga Castle was built more than 700 years ago, and the last major restoration works to the castle were carried out in the 16th century.

As a result, ample evidence has been revealed from the earliest days of Riga Castle. These include the 600-year-old hot air or hypocaust oven, historical decorations from different periods, previously unknown wall paintings in the chapel and the Remtera Hall, as well as a 16th-century mural on the south side of the facade.

As well as the mezzanine coverings being removed in the chapel and Remtera Hall, the original height of the ceiling in these rooms has been restored. Additional safety solutions have been implemented in Remtera Hall to improve its resilience and to ensure the stability of columns embedded in the wall.

With the renovation of the convent, the Latvian National History Museum is returning to its historical home and opening part of its exhibition. Following the restoration and reconstruction of the castle’s remaining rooms, the permanent exhibition on Latvian history will also be installed in the castle. Nearly 16 million euros (excl. VAT) are being invested in the Riga Castle project. In cooperation with LNK Industries, 4,400 m2 of Riga Castle, out of a total area of 11,900 m2, is being renovated at this stage.

LOCATION	RIGA, LATVIA
COMMISSIONED BY	SJSC STATE REAL ESTATE
CATEGORY	CIVIL CONSTRUCTION
DESIGNED BY	PARTNERSHIP “RIGA CASTLE CASTELLA PROJECT” – ANASTASIJA PIMENOVA, REINIS LIEPIŅŠ, ILONA MARKUSE
STARTED	MARCH 2020
COMPLETED	DECEMBER 2023





# DIENVIDU VĀRTI

PHASE 4

SOUTHERN GATES CLASS-A COMPLEX  
OF OFFICE, WAREHOUSE AND  
SALES PREMISES

LOCATION	RIGA, LATVIA	DESIGNED BY	ARX ARHITEKTI LTD
COMMISSIONED BY	LNK PROPERTIES	STARTED	APRIL 2019
CATEGORY	CIVIL CONSTRUCTION	COMPLETED	MARCH 2023



Dienvidu Vārti is a multifunctional industrial park with an area of 5 ha, combining warehouse, office, trade and production facilities. In total, the park includes five buildings and modern, high-quality infrastructure with a total lease area of 20,000 m2.

The buildings in the complex are constructed in accordance with the principles of energy efficiency and are fully equipped with modern engineering communications and telecommunications. An individual heating system has been built for each building to easily control the temperature and energy consumption. The internal layout of the buildings in the complex can be designed and adapted to the needs of the lessees.



# V118 OFFICE COMPLEX

During the reconstruction process, the reinforced concrete frame of the building was preserved, completely changing its visual image. The seven-storey V118 building offers Class A office space with an area of 7,049 m2, ranging from 150 m2 to 5,000 m2. The flexible layout allows users to separate and combine open and closed office areas. On the first floor, there is the main lobby, a cafe and an outdoor terrace. On the uppermost floor of the building, there is a wide green terrace for relaxing and working outside.

The building meets the highest energy-efficiency standards. During construction, great emphasis was placed on recycling and using environmentally friendly materials, as well as sorting and recycling construction debris.

Solar panels have been installed for energy efficiency, automatic facade blinds have been installed for temperature regulation, and a ventilated facade has been built.

The lighting of the facade of the office building is regulated automatically according to time settings, thus reducing electricity consumption and light pollution in the urban environment. By creating a green zone adjacent to the building, 99% of the existing greenery and trees have been preserved. The V118 building is certified under LEED, one of the world's most widely used green building rating systems.

LOCATION	RIGA, LATVIA
COMMISSIONED BY	SIA V118
CATEGORY	CIVIL CONSTRUCTION

DESIGNED BY	SIA ARX ARHITEKTI
STARTED	JUNE 2021
COMPLETED	NOVEMBER 2023



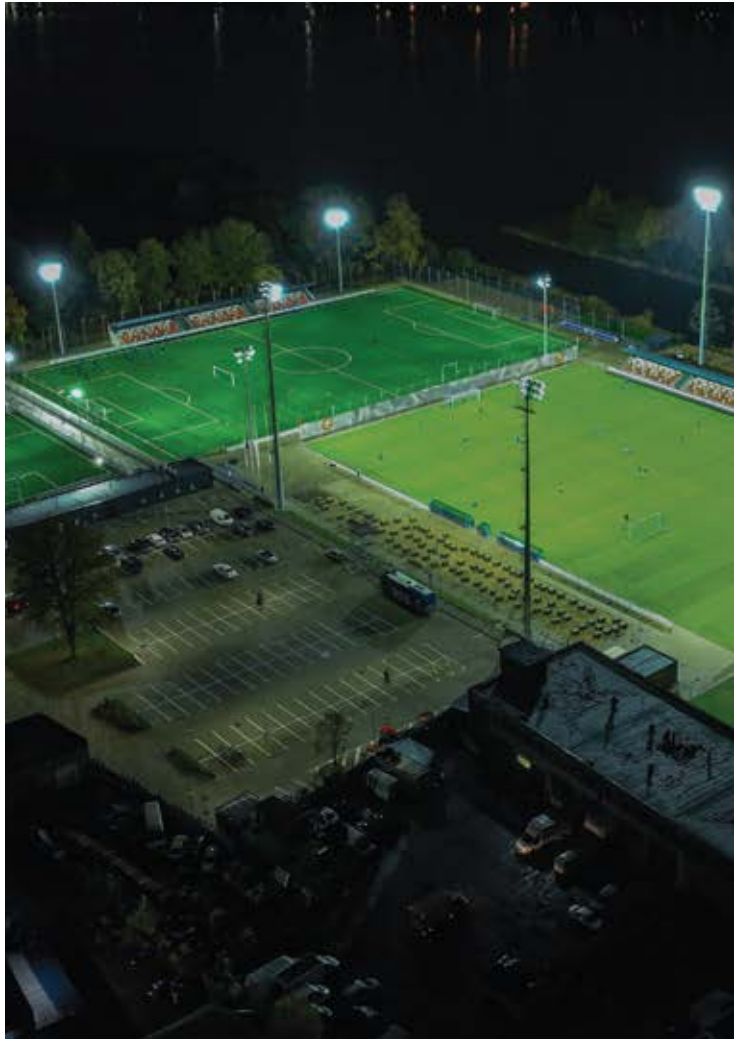


# LNK SPORTS PARK COMPLEX

LNK Sports Park is a multifunctional sports and recreation park on the right bank of the River Daugava. The park provides ample opportunities for training and competition. LNK Sports Park is the largest sports base for football in the Baltics, with several football pitches available simultaneously. At the park, 31 buildings were demolished, and the ground cover was prepared in the square to an accuracy of 4 mm. In the first round, a complex of 65,000 m2 was built, which includes two natural grass pitches (16,448 m2), four artificial surface areas (13,851 m2), and a natural surface warm-up area (1,350 m2).

In addition to football pitches, the park has beach volleyball and tennis courts. LNK Sports Park is the only sports and recreation park in Latvia where the artificial and natural surfaces are equipped with a watering system. The park has toilets, changing rooms with showers, and a playground for children. There is a fenced parking lot, an electric car charging point, and bicycle sheds. At the same time, the park is designed to ensure easy access for wheelchairs.

LOCATION	RIGA, LATVIA
COMMISSIONED BY	SIA LNK SPORTA PARKS
CATEGORY	CIVIL CONSTRUCTION
DESIGNED BY	SIA BC PROJECTS
STARTED	SEPTEMBER 2020
COMPLETED	NOVEMBER 2022





# APARTMENT COMPLEX. STUDENT ACCOMMODATION



A modern and sustainable apartment complex for students and young professionals, designed so as to include and complement the neighbouring ensemble of historic buildings in the region of Jelgavas Street. Two buildings – one six-storey and one four-storey – form a perfect synergy with the buildings of the University of Latvia and the business centre on the opposite side of the Kīleveina grāvis.

The complex is built using concrete and wood finishing materials, which do not require additional maintenance, while the facade is fitted with large windows. There is a roof terrace with greenery alongside the Kīleveina grāvis. In total, 240 studio apartments are available, the interiors of which are maintained in a modern and contemporary style.

The apartments are fully furnished, equipped with a kitchen, bathroom, and a working and sleeping area; what's more, the tenants can independently control the ventilation system in their apartments. The complex includes spacious common areas for relaxing, playing sports and studying.

The students and young professionals have access to shared indoor facilities such as work, recreation and sports rooms, a gym and shared kitchens, as well as outdoor recreation areas, a terrace, parking spaces and bike racks.

LOCATION	RIGA, LATVIA
COMMISSIONED BY	J12 LTD.
PROJECT TYPE	MULTI-APARTMENT BUILDING

DESIGNED BY	DUAL ARHITEKTI LTD.
STARTED	JULY 2021
COMPLETED	JULY 2022





# RENAISSANCE RESIDENTIAL BUILDING

The concrete structures of the building stand out with their volume and monumental design, both from the outside and inside. The building is an excellent example of both art and architecture, and its construction required the use of unique materials combining both aesthetic and functional solutions. The Renaissance apartment project stands out for its architectural sophistication and high quality.

Ten apartments of different sizes – from one-storey to two-storey penthouse-type apartments with double-height ceilings both in the interior and in the facade – are available in the building. Each apartment has an open layout and an individual outdoor space separated from the rest of the building. The project is characterised by a futuristic design, and by reducing the consumption of energy and other resources, the efficiency and comfort of the building have been increased.



LOCATION	RIGA, LATVIA
COMMISSIONED BY	RENAISSANCE RESIDENCE LTD.
PROJECT TYPE	MULTI-APARTMENT BUILDING
DESIGNED BY	SARMA & NORDE ARHITEKTI LTD.
STARTED	2020
COMPLETED	2022

Each apartment has an individual heating unit. Thermal barriers have been installed to prevent cold bridges between the terraces and the living space, and the glass facade is made up of three-chamber windows with an ultraviolet (UV) protective coating. The apartment also offers several examples of smart technologies, remote meter readers, access control and a mobile application. Supporting the principles of sustainability, the building has an electric car charging station and a waste sorting room.





# RECONSTRUCTION OF THE SOUTH PIER AT THE PORT OF KLAIPĖDA

The construction of the Klaipėda harbour wall is the first project of its kind in Lithuania. As a result of the reconstruction, the port channel was deepened, and the associated infrastructure was expanded. Despite a series of challenges, the construction of an underwater wall was implemented at the port of Klaipėda.

Additional resources were brought to the project to ensure the high-quality execution of the work, including engineers, work managers, and experienced Finnish drilling rig operators. The upper edge of the retaining wall is located up to 11 m underwater, and the lower edge is up to 28 m below the surface of the water. The total length of the wall is 200 m. It is made of steel tubes drilled into the structure of the breakwater. A breakwater is an underwater barrier made of rocks, boulders and tetrapods.

The construction was carried out under the water with the help of floats and platforms raised above the water in the narrowest part of the port of Klaipėda, at the gate where there is heavy ship traffic. To create an underwater wall, D813 mm steel pipes with an average length of 14.3 m to 31 m were tightly connected to each other, forming a structure tightly connected underwater.

Drilling was accomplished through existing rock, massif blocks, and tetrapods without dismantling the pier structure through existing rock, massif blocks, and tetrapods using DTH drilling technologies, which are more widely used for drilling large piles through granite.

LOCATION	KLAIPĖDA, LITHUANIA
COMMISSIONED BY	KLAIPĖDAPIER
CATEGORY	HYDROTECHNICAL STRUCTURES

DESIGNED BY	SWECO
STARTED	2020
COMPLETED	SPRING 2024





# LIEPAJA GROYPNE

The 225-metre-long groyne represents one of the most effective methods for strengthening and protecting the shoreline against erosion for several decades. The groyne itself is similar to a pier and consists of geotextile tubes filled with sand, as well as large stones and concrete cubes. The head of the groyne is further strengthened with grooved walls to protect it from waves.

The conditions of its construction were challenging, requiring the construction works to be planned down to the day and hour, and in total, 6,481 cubic metres of sand, 16,936 cubic metres of Swedish granite, 1,919 large-sized concrete cubes and 207 tonnes of grooved walls were used in the construction. In the Baltics, the Liepaja Groyne is the only structure of this type to be built in recent years. In order to reduce the impact of construction works on the environment, geotextile tubes filled with natural sea sand were used at the base of the groyne.

LOCATION	LIEPĀJA, LATVIA
COMMISSIONED BY	LIEPĀJA MUNICIPALITY
CATEGORY	HYDROTECHNICAL STRUCTURES
DESIGNED BY	SIA HT – KONSALTINGS
STARTED	MARCH 2021
COMPLETED	MARCH 2023





# MOBILE BUNKER FOR SHIP LOADING

Bulk cargo transshipment from ships is carried out using hopper-type tanks or bunkers. Many ports and logistics centres around the world prefer easily adaptable mobile bunkers. While using bunkers of this kind, bulk cargo can be safely and efficiently loaded into trucks or railway wagons for overland transportation. Mobile bunkers have a self-propelled and rubber wheel system so that the equipment can be easily moved if necessary. Bunkers can be configured and customised according to the requirements of each port.

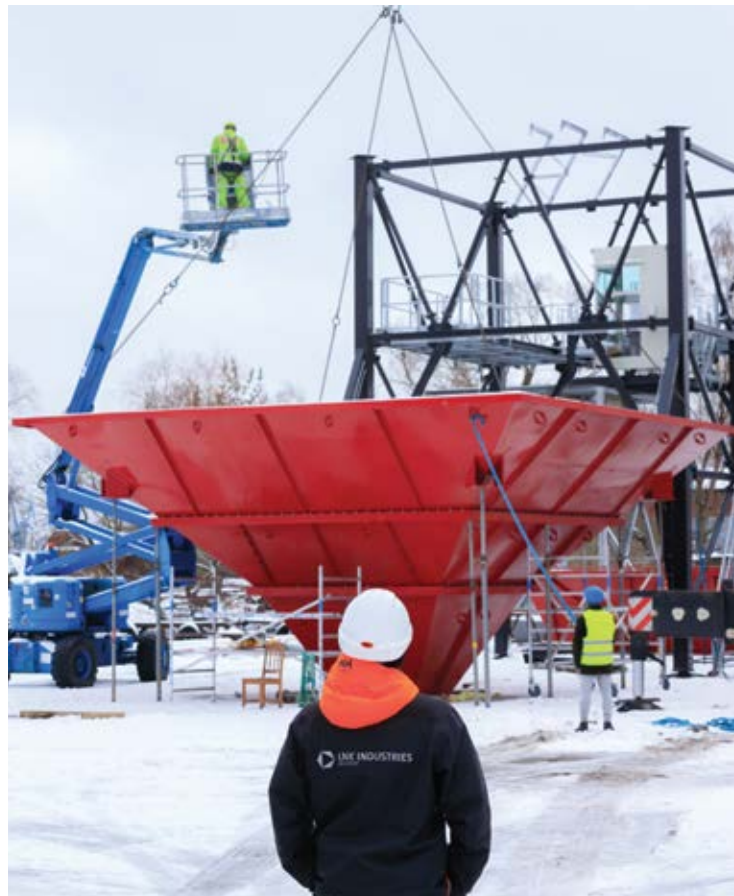
Equipment of this kind can handle various types of bulk cargo, including corrosive materials (such as sulphur). It is made of high-quality materials that are resistant to corrosion and wear and tear, and that increase the service life of the equipment. Due to integrated technologies, the equipment reduces air and noise pollution, improves process efficiency, and promotes care for the surrounding environment, and its cleanliness and sustainability.

## CUSTOMISATION OPTIONS MADE FOR SPECIFIC TASKS

LOADING CAPACITY 1000 T/H AND OVER

SUPPLY CAPACITY 130 T CARGO AND OVER

BULK CARGO ANY TYPE





# WE SUPPORT, CARE AND ENCOURAGE

SUPPORT FOR BUYING FURNITURE FOR THE CENTRE FOR SOCIAL INITIATIVE COMMON GROUND — A PLACE OF INTEGRATION FOR UKRAINIAN WAR REFUGEES.

SUPPORT TO THE ASSOCIATION CENTRE MARTA, WHICH PROVIDES HELP AND SECURITY TO LATVIAN WOMEN AND CHILDREN IN DIFFICULT SITUATIONS.

SUPPORT FOR THE ASSOCIATION SPORTS IKVIENAM FOR THE PURCHASE OF EQUIPMENT.

SUPPORT TO THE ASSOCIATION BĒRNU RĪTS FOR IMPROVING THE QUALITY OF CHILDREN'S LIVES IN SOCIAL CARE CENTRES.

SUPPORT FOR TONYBET FIGHT NIGHT, WHICH POPULARISES AND DEVELOPS BOXING IN LATVIA, GATHERING PARTICIPANTS FROM DIFFERENT COUNTRIES, INCLUDING UKRAINE.

SUPPORT WITH PROJECT IMPLEMENTATION IN JELGAVA — THE FACULTY OF THE KAĶU MĀJA VMF ANIMAL SHELTER — MODERN, COMFORTABLE CAT SHELTER PREMISES.

CARE FOR THE REMI CAT AID CENTRE AND THE KAĶA SIRDĀS SHELTER — PURCHASE OF PET FOOD AND IMPROVEMENT OF THE SITE.

**WE SHARE EXPERIENCES** – future RTU graduates and students at the Latvia University of Life Sciences and Technologies visited the construction site at Ģenerāļa Radziņa Krastmala, where construction works for the project of integrating Rail Baltica into the infrastructure of the centre of Riga are taking place.

**WE SHARE EXPERIENCES** – "Shadow Day" at Riga Castle, during which students learned about the construction industry and the day-to-day life of our construction managers onsite, and went behind the scenes on the construction site.

**WE SHARE EXPERIENCES** – an excursion to the construction site for Rail Baltica at Riga Airport, with students from Mathias Corvinus Collegium (MCC) in Budapest also in attendance in order to view construction progress and the day-to-day challenges the builders face.

**WE FACILITATE HEALTHY LIFESTYLES** – the company supports the desire of its employees to engage in different types of sport.

**WE PROMOTE HEALTHY LIFESTYLES** – every year, company employees participate in the Rimi Riga Marathon, and in 2023 they also participated in the World Athletics Road Running Championship, which was held in Riga. We are proud of our colleagues' achievements and the goals they reached!

**WE PROMOTE THE ACQUISITION OF KNOWLEDGE AND PROFESSIONAL SKILLS** – a one-off excursion for company employees to Riga Castle, and familiarising them with what it's like behind the scenes during the construction process.

**WE STRENGTHEN TEAM SPIRIT AT THE COMPANY THROUGH UNIQUE EXPERIENCES** – team-building events promote the ability to overcome obstacles and to work together, discovering that we are actually capable of much more than we thought.

**WE PROMOTE THE ACQUISITION OF KNOWLEDGE** – an excursion for company employees to the largest landfill site for domestic waste in the Baltic States, Getliņi. This was a special experience that also serves as a constant reminder: proper waste disposal has a huge role to play in protecting the environment!





WE BELIEVE THAT BY SUPPORTING EACH OTHER,  
WE CAN CREATE A PRESENT FULL OF OPPORTUNITIES  
AND A SAFER FUTURE FOR US ALL.

For over ten years the LNK charity fund, the association Charity.lv, has been helping children and adults with serious health problems and special needs, as well as low-income people, and supporting sports, culture and education. We assist pensioners who have worked in construction, we support minority associations, and we promote the development of Latvian civil society by caring for sick or distressed animals.

MORE ABOUT  
LNK CHARITY FUND PROJECTS:  
[WWW.CHARITY.LV](http://WWW.CHARITY.LV)



SUPPORT THOSE WHO CANNOT  
STAND UP FOR THEMSELVES!

The association has donated 168,000 euros to build a new functional building, a modern and comfortable cat shelter, for the animal shelter of the Faculty of Veterinary Medicine – the Cat House in Jelgava, within the grounds of the Latvian University of Biosciences and Technologies.

The modern cat shelter, which also houses an animal veterinary care clinic, is intended to accommodate homeless cats and cats ready for adoption, providing the most convenient and comfortable conditions for animals, employees and visitors.



HELPING  
BEZVESTS.LV.

If someone lost in the forest finds this tower, and presses the help button it is equipped with, bezvests.lv volunteers will come to them as soon as possible. This "rescue tower" currently has no analogues in Latvia. It is equipped with sound and light signals that are sure to attract the attention of anyone lost in the forest.

To call for help, press the button, and the signal will be immediately sent to bezvests.lv. The first "rescue tower" has been tested and works without errors. Bezvests.lv plans to build about ten towers. They will be installed along the search perimeter in order to avoid situations where, while looking for a missing person, volunteers get further and further away from the other searchers. The main goal of all the devices we develop is to reduce the amount of time spent searching.



SUPPORT FOR THE CHILDREN'S  
CLINICAL HOSPITAL  
FOUNDATION'S PROJECT  
"COURAGE BOX".

The Children's Clinical University Hospital has introduced "courage boxes," which aim to evoke positive emotions in patients and reduce anxiety before upcoming procedures. The association has contributed to the "courage box," allowing patients to forget pain, fear and worries, even if only temporarily. Going through the procedure and being away from home and from family, especially during the holidays, shows courage.



# CHARITY PROJECT "BETTER TOGETHER"



Since October 2023, the LNK Charity Fund, in cooperation with JSC LNK Industries, has been developing the "Better Together" charity project. This project involves carefully preparing a food box with everyday food products for low-income seniors and single parents.

The name of the project, "Better Together", reflects the essence of the project: practical support for our fellow human beings, by every month giving and delivering food boxes filled with various everyday products. By the end of 2023, 30 people were receiving monthly support. As part of the project, it is planned to provide assistance to up to 100 people by the end of 2024.



The goal of the "Better Together" project is to make everyday life easier for those on whose shoulders a great responsibility rests every day, who have not lost their humanity as a result of life's trials, and who continue to help others.



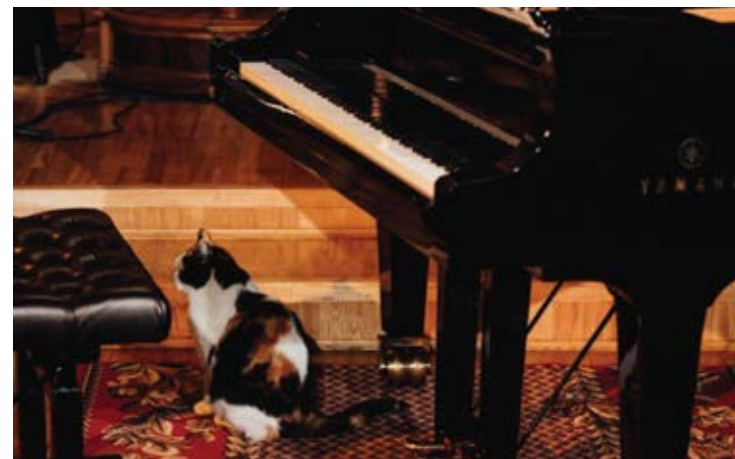
These people raise one or more children, survive with minimal means, and also devote their free time to charity – some volunteer at an animal shelter, others help their neighbours, and others devote their energy to the development of the local community.

This is practical support for those who least expect it but need it most!



## CREATING MORE MOMENTS OF HAPPINESS FOR CHILDREN!

A charity project, within the framework of which more than 150 children from orphanages were given the opportunity to attend the circus performance Alice in Wonderland. Performances were held in three Latvian cities: Riga, Liepāja and Daugavpils. Through the foundation, we were able to help the little ones and make them smile, to let them experience a fairy tale for a little while!



## SYMPHONY OF TOYS

The "Symphony of Toys" project was a specially organised Christmas charity concert for the whole family, which was attended by 600 people – including children from auxiliary schools, large families and low-income families. During the concert, people donated more than 800 toys to children. Some of the toys donated during the event were given to charitable organisations: the Children's Morning foundation and the association Latvijas Audžugimenu Asociācija. The foundation's support for this project is long-term.

## SUPPORT FOR PIANIST DANIILS MICKEVIČS

The support provided by the LNK Charity Foundation helped the artist Daniils Mickevičs to fulfil a long-cherished dream! At the end of July 2023, the pianist participated in the International Student Musical Summer Academy Campus Cleve 2023, which took place in Cleve, Germany. As part of the summer academy, the young artist participated in several important events, contributing to his further creative development and mastery of piano playing.

## EXHIBITION "CLOSED BORDERS"

The Foundation supported the creation of an addendum to the exhibition "Closed Borders: The Story of Latvia" about the manifestation of the European migration crisis in pre-war Latvia on the eve of World War II: by 1938 hundreds of thousands of Jews wanted to leave Hitler's Germany and annexed Austria. Unique documents were used to create the exhibition – registration journals from the Latvian Ministry of the Interior from the pre-war period, and copies of documents from the Latvian State Archives and the archives of the Literature, Theatre and Music Museum. The exhibition presented information about the fate of individual German Jewish refugees in Latvia and exhibited photographs from the private archives of their relatives.

## PEOPLE, CATS AND MUSIC

By caring for our four-legged friends and helping the Remi cat help centre, the Osokina Freedom Festival was supported! As part of the festival, the "People, Cats and Music" concert at the Anglican Church was dedicated to pets who have suffered in the war in Ukraine. At the concert, Latvian and Ukrainian artists joined together in support for the dogs and cats in Ukraine who have suffered as a result of Russia's war, as well as for the residents of the Remi cat aid centre and Kaķa Sirds shelter right here in Latvia!



## SUPPORTING UKRAINIAN BOXERS

Bohdan Myronets is a professional boxer from Ukraine who has been living and training in Riga since the end of 2022. Professional sports are relatively gruelling, and an elbow injury has made itself felt in the last two years. Although the boxer won an important fight, the hand caused considerable inconvenience and prevented him from continuing to train fully. Thanks to the foundation, the Ukrainian boxer underwent an operation at the best clinic in Latvia, and now, after a successful recovery, he has returned to training.



# FOOTBALL UNITES!

The company has supported the RFS football club since 2016, when it debuted in the Latvian Football Premier League. During this time, the club has strengthened its position among the strongest Latvian football clubs, became Latvian champions twice, and won the Latvian Cup twice!

In 2021, RFS became the champions of Latvia for the first time and managed to repeat this achievement last year, in 2023, after a dramatic end of the season. It should be emphasised here that both RFS championship titles were won in situations where their main competitors had significantly greater financial resources and were considered clear favourites in media coverage.

2022 was a special year for RFS, as the team debuted in the UEFA Champions League qualifying tournament and became the first football club in the history of Latvia to enter the group stage of the prestigious UEFA European Conference League. There, RFS achieved a sensational away draw against the Italian football giants Fiorentina, as well as drawing in Riga with the Turkish club Basaksehir.



RFS's successful development and professional growth, starting from their debut in the Latvian Football Premier League right up to the first appearance in the UEFA European Conference League, has been possible thanks to the long-term support of JSC LNK Industries. The RFS club's home and training ground is LNK Sport Park, which is the largest football sports base in the Baltics, and the construction of which was carried out by JSC LNK Industries.

The club's future goals are to become Latvian champions again, reach and win the final of the Latvian Cup, and to repeat their most ambitious achievement so far, and qualify for the main European tournament again.



# LNK BOXING

Our company promotes a sporty and active lifestyle in society by supporting sports organisations such as LNK Boxing. By providing support to this boxing organisation, the sport is made accessible to wider society, thus creating opportunities for young people and adults to get involved in sports, which positively affects their physical and mental development.

It is very important for the company to help improve LNK Boxing's training infrastructure, select qualified trainers, organise competitions, and attract new sports enthusiasts by providing these necessary resources and by popularising boxing.





# PARTNERS

When choosing our partners, we expect not only impeccable reputation and ethical standards, but also the ability to provide the highest quality of service. We are privileged to work with leaders in their field.





# CONTACTS

AS LNK INDUSTRIES

ADDRESS: 118 KRISJANA VALDEMARA STREET,  
LV-1013, RIGA, LATVIA

PHONE: +371 6743 9900  
E-MAIL: OFFICE@LNK-INDUSTRIES.LV



SOCIAL MEDIA

- LNKINDUSTRIES
- COMPANY/LNKINDUSTRIES
- LNK-INDUSTRIES.LV